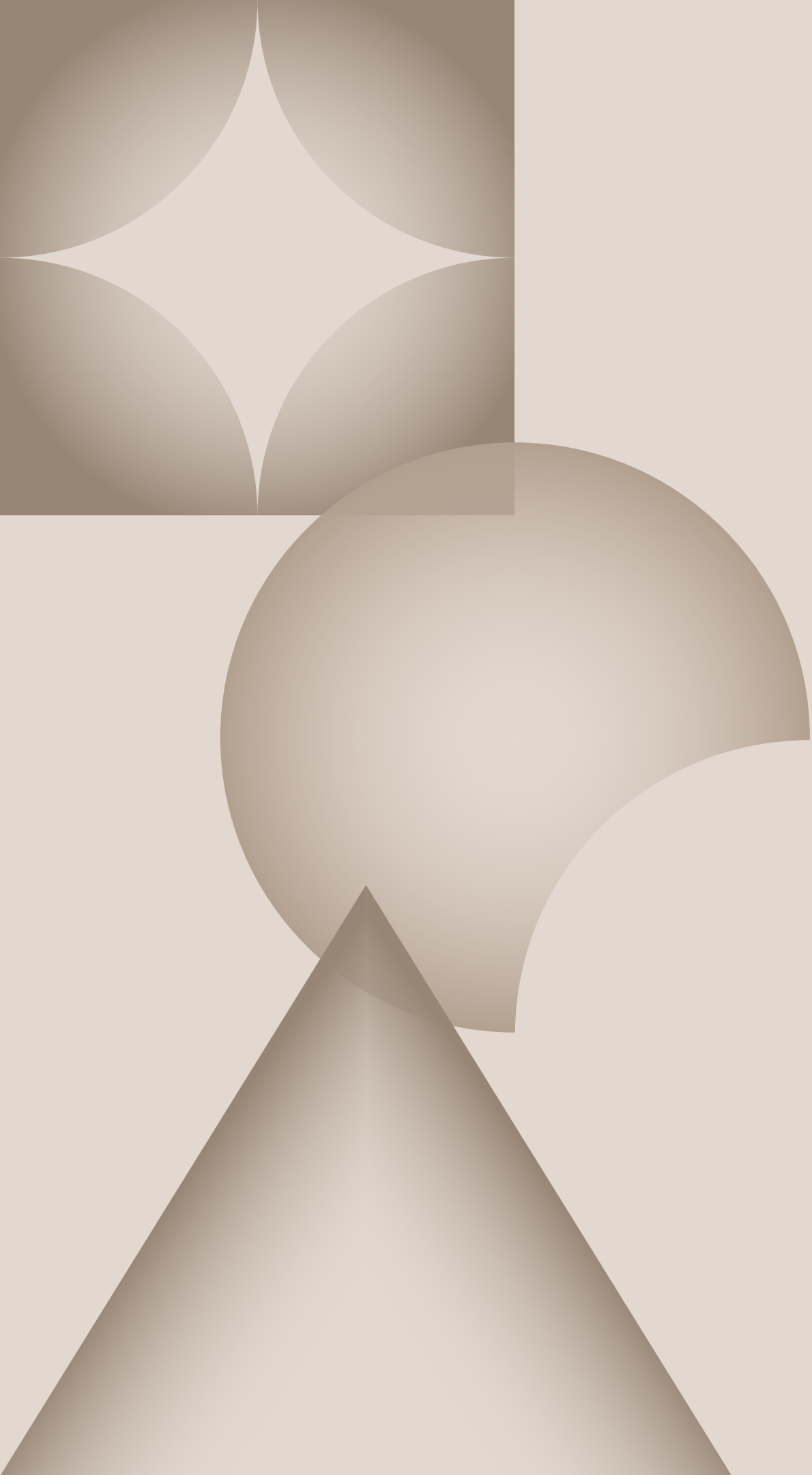




Orthophthalic Resin in Automotive

Innovations in Material Engineering for Enhanced Performance



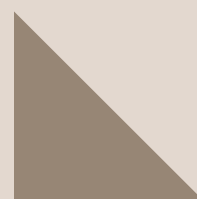
**Orthophthalic resin
plays a crucial role in
enhancing the
durability and
performance of
automotive
components.**

Orthophthalic resins are a type of **thermosetting polymer** widely used in various applications due to their excellent properties.

These resins are known for their good *mechanical strength*, resistance to chemicals, and thermal stability, making them ideal for automotive manufacturing.

OVERVIEW OF ORTHOPHTHALIC RESINS

REINFORCEMENT METHODS FOR RESIN STRENGTH



Reinforcement techniques significantly enhance the **durability** and structural integrity of orthophthalic resins used in automotive applications.



By employing various materials, manufacturers can achieve **impressive performance** characteristics, improving the overall lifespan and reliability of automotive components.

STEPS IN CREATING AUTOMOTIVE COMPONENTS



The manufacturing process utilizes **orthophthalic resin** to enhance component strength and durability.

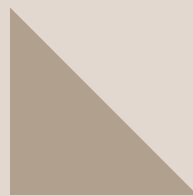


Each step involves precise **molding techniques** to ensure optimal performance and quality.

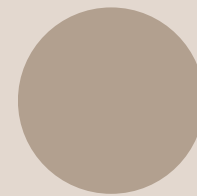


Regular quality checks are implemented to maintain **consistency** and meet industry standards throughout production.

END-USE APPLICATIONS OF ORTHOPHTHALIC RESIN



Orthophthalic resin is widely used in **automotive components**, providing durability and lightweight properties essential for modern vehicles.



These resins are commonly found in **body panels**, contributing to improved aesthetics and strength while reducing overall vehicle weight.



In addition, orthophthalic resin is utilized in **interior applications**, such as dashboards, enhancing both design flexibility and thermal resistance.



Moreover, this resin plays a critical role in **composite materials**, ensuring effective reinforcement for parts exposed to extreme conditions.



ADVANTAGES OF ORTHOPHTHALIC RESIN

Orthophthalic resin offers excellent **strength, durability**, and resistance to environmental factors. It's a preferred choice in automotive manufacturing due to its ability to enhance performance and **reduce overall weight**.

CASE STUDY: ORTHOPHTHALIC RESIN IN ACTION



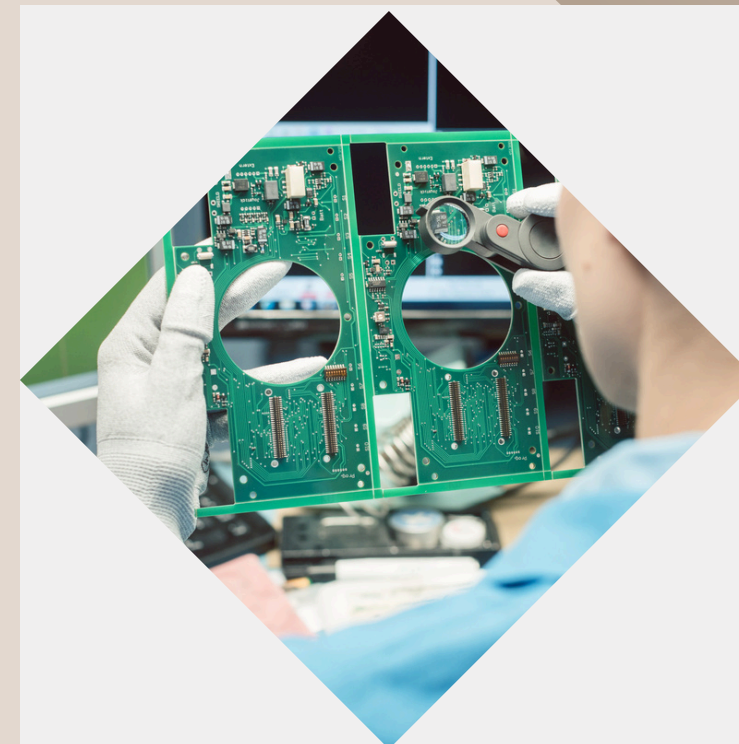
Production Efficiency

This image showcases the streamlined process in automotive assembly using resin components.



Enhanced Durability

Here, we see the robust finished components designed to withstand automotive conditions.



Quality Assurance

This image highlights the rigorous testing process ensuring top-notch material performance.

CONCLUSIONS AND RECOMMENDATIONS FOR AUTOMOTIVE INDUSTRY

Orthophthalic resin offers durability and strength in automotive applications, enhancing vehicle performance and longevity.

Emphasizing innovation in manufacturing processes can lead to improved efficiency, lower costs, and **sustainable practices** within the industry.

LET'S CONNECT
FOR MORE
INSIGHTS!

- **Email**
enquiry@crestresins.com

Website
[CREST RESINS](http://crestresins.com)

Phone
[+91 9879233188](tel:+919879233188)